

# Head Details

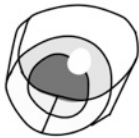
## Eyes

The two most common types are “Toony” and “Follow-me”. The diagrams below outline these methods. You can also use taxidermy eyes or hand painted resin eyes for a realistic look. (*Vision for these options is through the tear ducts not the eye itself*).

### Follow Me Eyes



Step 1) Draw your eye on buckram and color it in. Make sure you get a buckram you can see through



Step 2) Cut a small strip of white craft foam and wrap it around the eye and secure with hot glue.

### Toony Eyes

Step 1) Cut the shape of an eye out of a plastic bowl.

Step 2) Cut a hole in the eye where the iris and pupil will go.

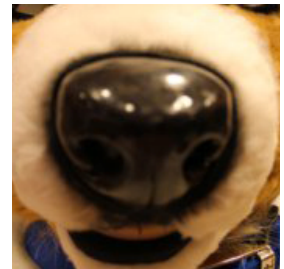
Step 3) Draw and color your pupil and iris on buckram.

Step 4) Glue buckram onto the backside of the eye.

Eyebrows and eyelids can add a lot of personality to your character. Experiment with what fits your character best.

## Nose

There are many different styles of noses. You can make them out of sculpy, felt, fleece, resin or buy them pre-made.



## Mouth and Teeth

Depending on the style of costume, you may want to use taxidermy parts. For a toony look, you can use sculpy teeth and a sewn fleece tongue.

